

# Overall Course

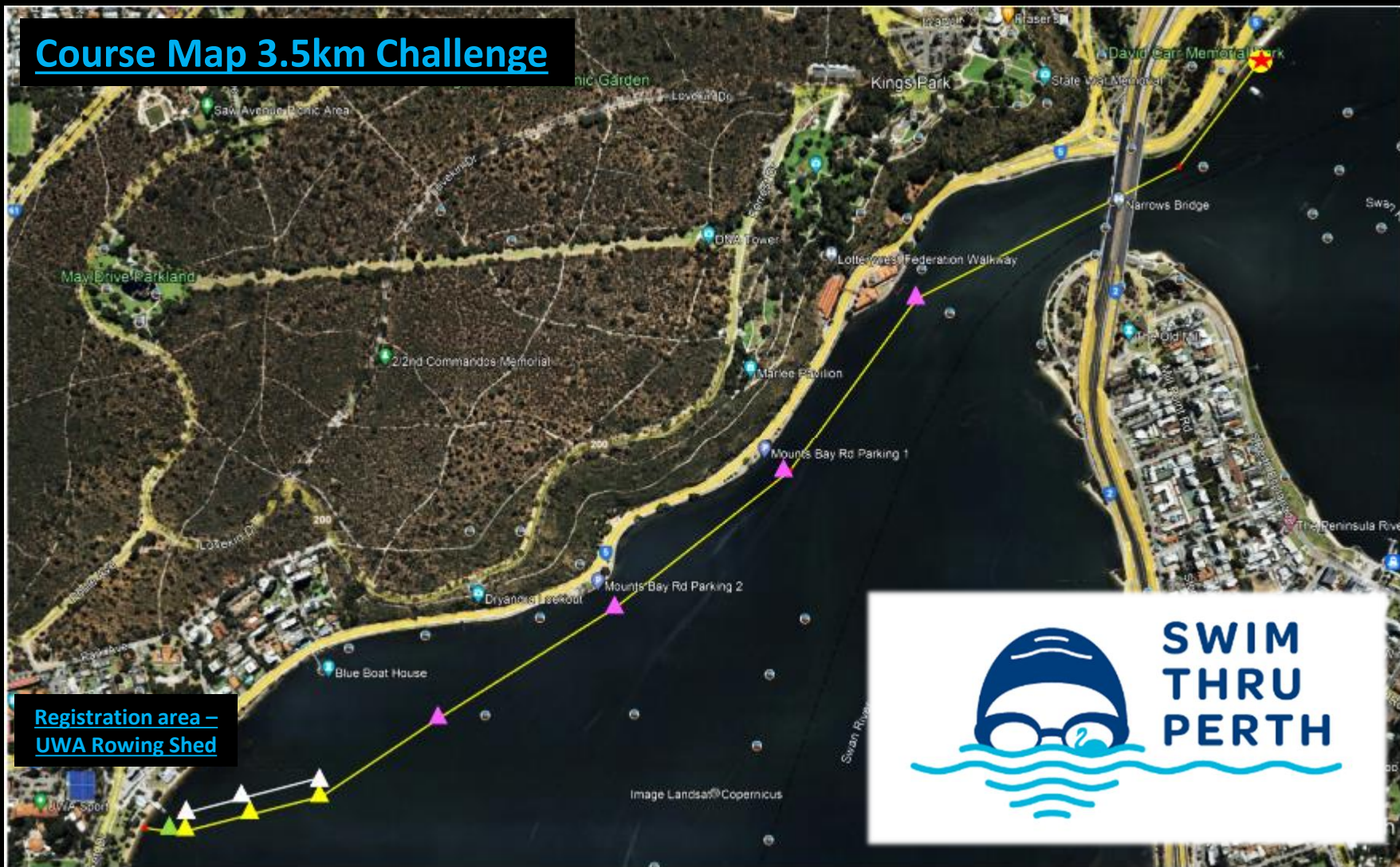


**Registration area –  
UWA Rowing Shed**



- 🌟 Start of Course Buoy
- 800m/1600 m circuit
- 3500 m course
- ▲ 800m / 1600m outbound buoys
- ▲ 800m / 1600m inbound buoys
- ▲ Final turn buoy – approach to finish
- 🏁 Finish Line Approach Chequered Buoy
- ▲ 3500m Waypoint Buoy

# Course Map 3.5km Challenge



- ★ Start of Course Buoy
- 800m/1600 m circuit
- 3500 m course
- ▲ 3500m Waypoint Buoy

- ▲ 800m / 1600m outbound buoys
- ▲ 800m / 1600m inbound buoys
- ▲ Final turn buoy – approach to finish
- ▣ Finish Line Approach Chequered Buoy

## Course Map 1.6km Classic Mile



- Start of Course Buoy (removed after start)
- 1600 m circuit (x 2)
- 1600m outbound buoys
- 1600m inbound buoys
- Final turn buoy – approach to finish
- Chequered Buoy – finish line approach
- Finish boom

# Course Map 800m Matilda Splash



- ★ Start of Course Buoy (removed after start)
- 800 m circuit (x 1)
- ▲ 800m outbound buoys
- ▲ 800m inbound buoys
- ▲ Final turn buoy – approach to finish
- Chequered Buoy – finish line approach
- Finish boom

# EVENT CAR PARKING GUIDE

UWA CAR PARK NUMBER 3

Hackett Entrance 1

Hackett Drive, Crawley

